

# MLS Area NE

# Residential Statistics



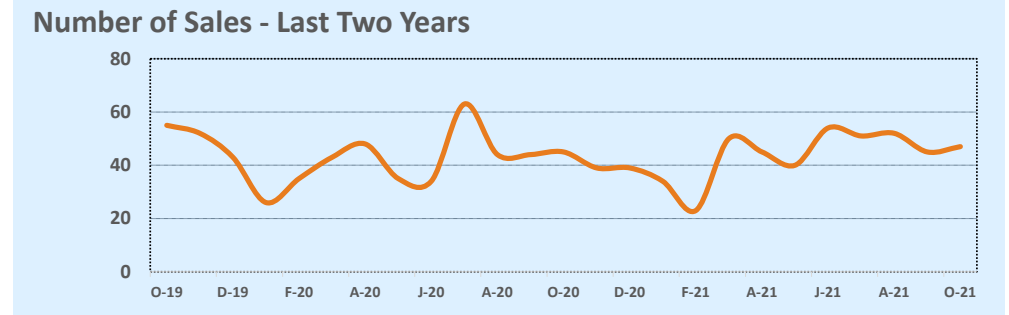
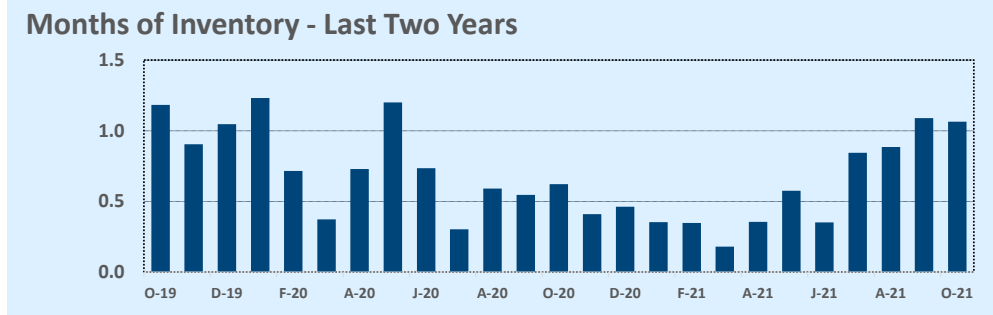
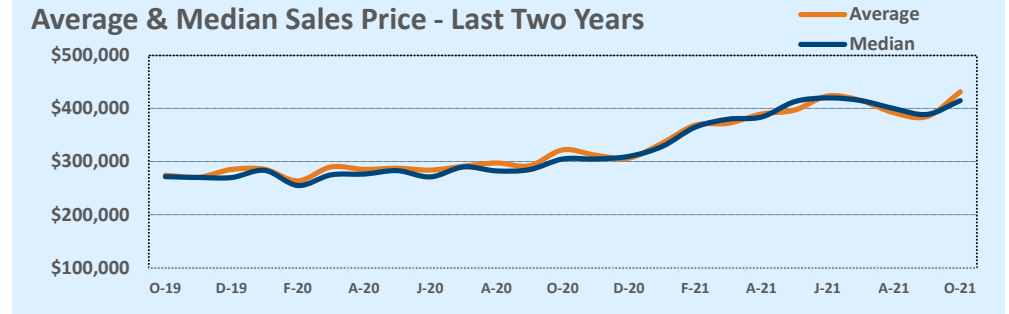
# October 2021

Listings	This Month			Year-to-Date		
	Oct 2021	Oct 2020	Change	2021	2020	Change
Single Family Sales	39	43	-9.3%	348	358	-2.8%
Condo/TH Sales	8	2	+300.0%	93	59	+57.6%
<b>Total Sales</b>	<b>47</b>	<b>45</b>	<b>+4.4%</b>	<b>441</b>	<b>417</b>	<b>+5.8%</b>
New Homes Only	2	--	--	21	8	+162.5%
Resale Only	45	45	--	420	409	+2.7%
Sales Volume	\$20,281,325	\$14,501,579	+39.9%	\$173,940,962	\$121,343,287	+43.3%
New Listings	53	46	+15.2%	600	430	+39.5%
Pending	--	--	--	--	--	--
Withdrawn	3	--	--	7	9	-22.2%
Expired	3	--	--	7	9	-22.2%
Months of Inventory	1.1	0.6	+71.0%	N/A	N/A	--

Price Range	This Month			Year-to-Date		
	New	Sales	DOM	New	Sales	DOM
\$149,999 or under	--	--	--	--	1	56
\$150,000- \$199,999	--	--	--	6	3	13
\$200,000- \$249,999	1	1	350	26	14	33
\$250,000- \$299,999	1	4	17	58	51	19
\$300,000- \$349,999	2	4	6	84	77	14
\$350,000- \$399,999	9	8	30	107	80	10
\$400,000- \$449,999	16	18	19	137	106	10
\$450,000- \$499,999	14	6	12	112	61	8
\$500,000- \$549,999	4	--	--	38	23	7
\$550,000- \$599,999	--	2	4	11	10	5
\$600,000- \$699,999	4	2	18	14	12	8
\$700,000- \$799,999	--	1	8	1	1	8
\$800,000- \$899,999	--	--	--	1	1	154
\$900,000- \$999,999	--	1	97	2	1	97
\$1M - \$1.99M	1	--	--	2	--	--
\$2M - \$2.99M	--	--	--	--	--	--
\$3M+	1	--	--	1	--	--
<b>Totals</b>	<b>53</b>	<b>47</b>	<b>26</b>	<b>600</b>	<b>441</b>	<b>13</b>

Average	This Month			Year-to-Date		
	Oct 2021	Oct 2020	Change	2021	2020	Change
List Price	\$428,054	\$318,234	+34.5%	\$366,309	\$291,397	+25.7%
List Price/SqFt	\$244	\$177	+37.9%	\$218	\$168	+29.4%
Sold Price	\$431,518	\$322,257	+33.9%	\$394,424	\$290,991	+35.5%
Sold Price/SqFt	\$246	\$179	+37.0%	\$234	\$168	+39.2%
Sold Price / Orig LP	101.7%	101.4%	+0.3%	108.5%	99.9%	+8.5%
Days on Market	26	14	+91.8%	13	22	-43.3%

Median	This Month			Year-to-Date		
	Oct 2021	Oct 2020	Change	2021	2020	Change
List Price	\$404,900	\$292,500	+38.4%	\$352,000	\$282,000	+24.8%
List Price/SqFt	\$229	\$182	+25.4%	\$211	\$163	+28.9%
Sold Price	\$415,000	\$305,000	+36.1%	\$395,000	\$282,000	+40.1%
Sold Price/SqFt	\$238	\$187	+27.4%	\$229	\$164	+39.9%
Sold Price / Orig LP	100.0%	101.5%	-1.5%	105.9%	100.0%	+5.9%
Days on Market	11	5	+120.0%	5	7	-28.6%



Based on information from the Austin Board of REALTORS® (alternatively, from ACTRIS). Neither the Board nor ACTRIS guarantees or is in any way responsible for its accuracy. The Austin Board of REALTORS®, ACTRIS and their affiliates provide the MLS and all content therein "AS IS" and without any warranty, express or implied. Data maintained by the Board or ACTRIS may not reflect all real estate activity in the market.